

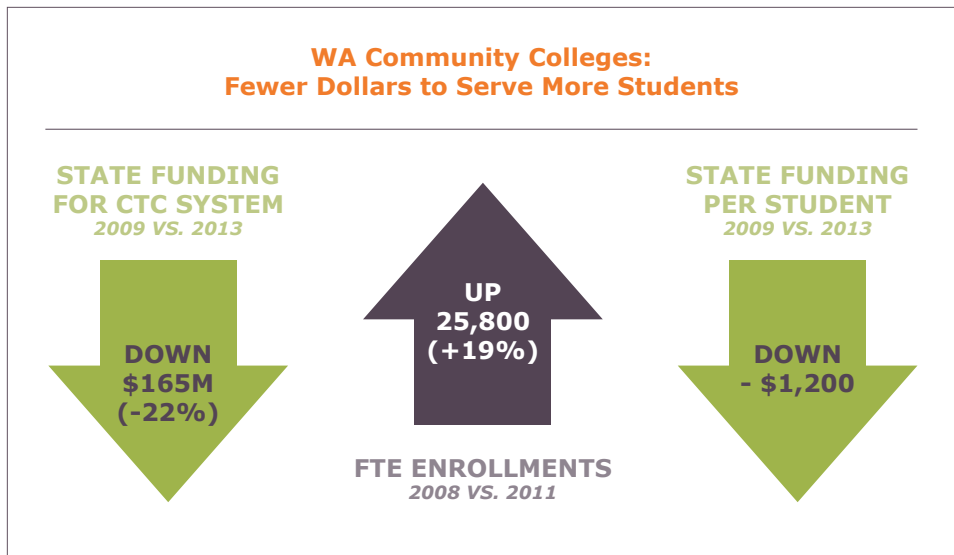
# BEYOND THE HEADLINES

## At a Glance: Jobs, Workers & the Economy

MAY 2012 | FOCUS: WASHINGTON STATE

### Adult Basic Ed Students Feel the Impact of State Budget Cuts

While coming through the 2012 state legislative session mostly unscathed, Washington's Community and Technical College (CTC) system has endured significant budget cuts over the past few years while at the same time serving record numbers of students.<sup>i</sup>



The CTC system has been employing efficiency measures to meet budget reductions, but now students are beginning to feel the direct impact of cuts. After years of absorbing growing enrollments, the State Board for Community & Technical Colleges (SBCTC) is projecting that the colleges will serve about **10,000 fewer students in the current academic year** (2011-12) than in the previous year.<sup>ii</sup>

#### Impact On Adult Basic Education

**ABE programs and students** have been hit hardest by state budget cuts. Colleges have significantly reduced ABE classes, primarily because they generate little revenue (students pay a \$25 per quarter fee in lieu of tuition), and thus there is a financial disincentive to allocate scarce resources to support these programs.

The following table<sup>iii</sup> shows State Supported FTE enrollment within Washington’s CTC system during the past five academic years. ABE (Basic Skills) enrollments diminished by 2.6% two years ago and another 6.9% last year. Workforce enrollments have also begun to decline.

**FTEs By Course Intent – State Supported  
Academic Years 2006-07 to 2010-11**

	2006-07	2007-08	2008-09	2009-10	2010-11
<b>Academic</b>	<b>52,600</b>	<b>54,165</b>	<b>58,367</b>	<b>64,963</b>	<b>68,195</b>
% Change	-1.7%	3.0%	7.8%	11.3%	5.0%
<b>Workforce</b>	<b>47,108</b>	<b>47,993</b>	<b>51,831</b>	<b>56,687</b>	<b>55,591</b>
% Change	2.9%	1.9%	8.0%	9.4%	-1.9%
<b>Pre-College</b>	<b>11,663</b>	<b>12,165</b>	<b>13,205</b>	<b>15,020</b>	<b>15,633</b>
% Change	-0.7%	4.3%	8.5%	13.7%	4.1%
<b>Basic Skills</b>	<b>20,662</b>	<b>21,876</b>	<b>23,899</b>	<b>23,269</b>	<b>21,661</b>
% Change	5.3%	5.9%	9.2%	-2.6%	-6.9%
<b>All Courses</b>	<b>132,033</b>	<b>136,199</b>	<b>147,302</b>	<b>159,939</b>	<b>161,081</b>
% Change	1.1%	3.2%	8.2%	8.6%	0.7%

Source: SBCTC Data Warehouse, Class Table.

Those colleges that typically serve a large number of ABE students have experienced even more significant cuts to their ABE enrollments<sup>iv</sup>:

**State Supported Adult Basic Ed FTEs  
Top 5 Colleges by % Decreased Enrollment  
Academic Year 2009-10 to 2010-11**

Community College	% Change in Enrollment
Skagit Valley Community College	<b>-26%</b>
Shoreline Community College	<b>-23%</b>
Highline Community College	<b>-20%</b>
Pierce Community College District	<b>-15%</b>
Lake Washington Technical College	<b>-13%</b>

## Who Are Washington's ABE Students?

ABE students are low-skilled, frequently low-income students, a large percentage of whom are speakers of English as a second language and/or people of color. These individuals make up the fastest growing demographic in Washington State and are therefore critical to our future workforce. ABE courses are an essential gateway for these individuals to acquire more skills and education needed for the current and future labor market.

### **Some facts about Washington State's ABE students:**

- Fewer than 5% of ABE students that are employed earn a living-wage
- ABE students do not qualify for federal financial aid
- ABE classes serve the fastest growing segment of our state's workforce
- 67% are older students (25+)
- 68% are people of color

- 
- i. See the Washington State Board for Community & Technical Colleges publications: *Washington's Community and Technical Colleges 2012 Legislative Agenda* at [http://www.sbctc.ctc.edu/college/documents/leg\\_agenda\\_2012.pdf](http://www.sbctc.ctc.edu/college/documents/leg_agenda_2012.pdf) and *Washington's Community and Technical Colleges Improving Efficiency and Student Achievement Policy Brief* at <http://www.sbctc.ctc.edu/college/documents/EfficiencyandEffectivenessOverview-Final.pdf>
  - ii. *Ibid.*
  - iii. Washington State Board for Community & Technical Colleges *2010-2011 Academic Year Report* at [http://www.sbctc.edu/college/\\_d-acad2010-11.aspx](http://www.sbctc.edu/college/_d-acad2010-11.aspx)
  - iv. Washington State Board for Community & Technical Colleges *Annual 2010-11 Enrollment Report* at [http://www.sbctc.edu/college/education/annual\\_201011\\_enrollment\\_rpt\\_revised2\\_000.pdf](http://www.sbctc.edu/college/education/annual_201011_enrollment_rpt_revised2_000.pdf)
  - v. See Washington State Board for Community & Technical Colleges publications: *2011-13 Operating Budget Request – Policy Level Decision Packages* at [http://www.sbctc.ctc.edu/college/finance/pl\\_recsum\\_and\\_rollup\\_001.pdf](http://www.sbctc.ctc.edu/college/finance/pl_recsum_and_rollup_001.pdf) and *Research Report No. 08-1, Increasing Student Achievement For Basic Skills Students*, January 2008 at [http://www.sbctc.ctc.edu/college/education/resh\\_rpt\\_08\\_1\\_student\\_achieve\\_basic\\_skills.pdf](http://www.sbctc.ctc.edu/college/education/resh_rpt_08_1_student_achieve_basic_skills.pdf). Data on average age and race of ABE students refer to 2006-2007 academic year.

**BEYOND THE HEADLINES:** Policy & Labor Market Updates for Those Working to Help Low-Income and Low-Skill Individuals Advance through Education, Training & Living-Wage Jobs

### **About Seattle Jobs Initiative**

Seattle Jobs Initiative creates opportunities for students, workers and business to succeed by helping education and job training programs meet the demands of a new economy. We find and apply solutions for people to gain the skills they need for good jobs that create prosperity for all in today's marketplace.

**Supported by the City of Seattle Office of Economic Development**

### **Contact Information**

For questions or suggestions, please email David Kaz, SJI Director of Policy and Development at: [dkaz@seattlejobsinit.com](mailto:dkaz@seattlejobsinit.com)